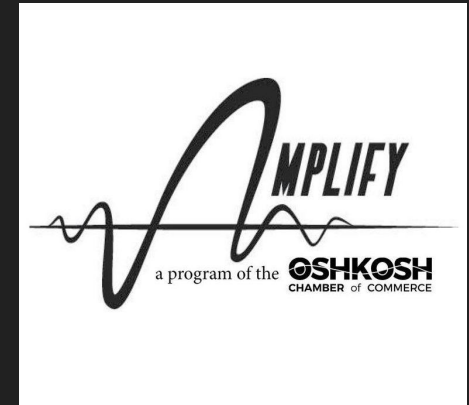
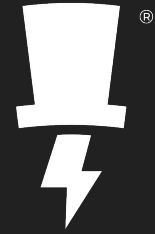
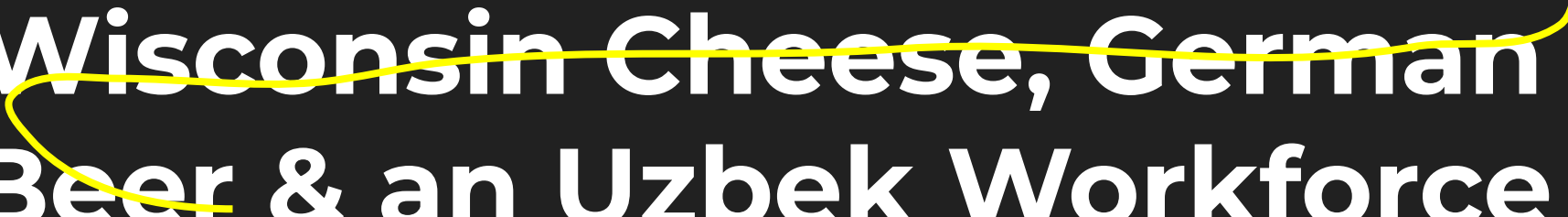


**THANK YOU TO  
THE SPONSORS OF  
THIS AMPLIFY  
EVENT**



A yellow scribble that starts from the top right, loops around the top of the main title, and then loops back down to underline the word 'Beer' in the main title.

# Wisconsin Cheese, German Beer & an Uzbek Workforce

The Benefits of Global Remote Hiring

# Hi, I'm Julia.



Milwaukee, WI



2014

**Computer Science at Columbia**

**College** - Columbia, MO

**Data Analytics Consulting**

- Chicago, IL

**Vanderbilt University Research**

**Study** - Nashville, TN

**WorkMarket** - New York City, NY

**ADP** - New York City, NY

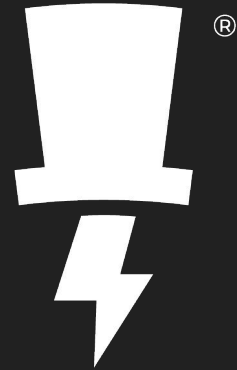
2021

**Lincoln Labs** - Oshkosh, WI



# Lincoln Labs

tech collective that brings  
ideas, capital, resources,  
and talent together to  
launch and scale innovative  
technology products



# Top Challenges Tech Companies are Facing in 2022



managing  
remote team  
members



retaining top  
talent



achieving  
hiring goals



How many open Software  
Engineering jobs are in  
the Fox Valley?

How many of  
the Green Bay  
Packers  
players are  
actually from  
Green Bay?

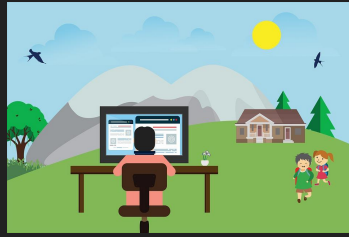




# Benefits of Global Remote Hiring



decrease  
your company's  
labor costs



access to the most  
talented individuals  
regardless of borders



diverse perspectives  
and experiences



distributed companies  
have around-the-clock  
support and  
multilingual coverage

...just to name a few

# Challenges of Global Remote Hiring



Lincoln Labs team holiday event 2021

- coordinating working hours
- getting people physically together can be expensive and complex
- language barrier
- legal and financial complexities



# How Can

The logo for TRUSS features a stylized 'T' composed of three overlapping squares in shades of gray and white, followed by the word 'TRUSS' in a bold, white, sans-serif font. The entire logo is set against a solid purple rectangular background.

# TRUSS

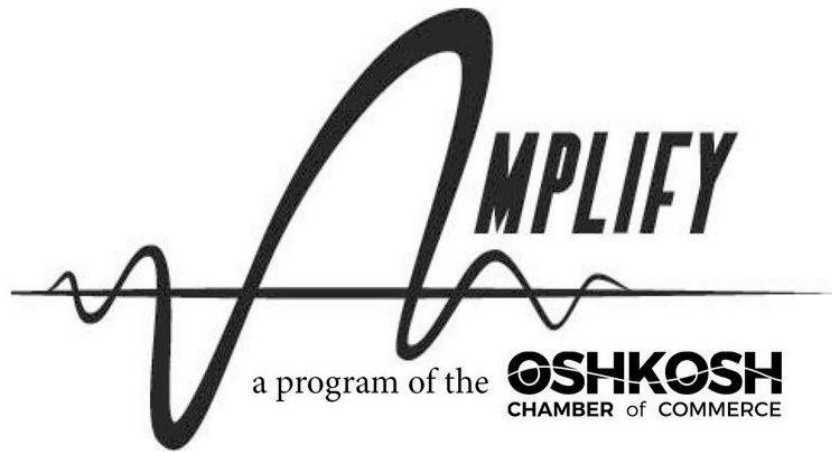
# Help?

Our Employer of Record services makes hiring globally fast, easy and inexpensive.

- recruit/find
- hire
- retain
- consult
- global payroll & localized benefits packages
- clients big & small

- unite around a purpose
- check-in often
- set clear availability expectations
- be results oriented
- invest in tools that make remote collaboration easier

## **How to set up your company for success when growing globally**



## THE MISSION:

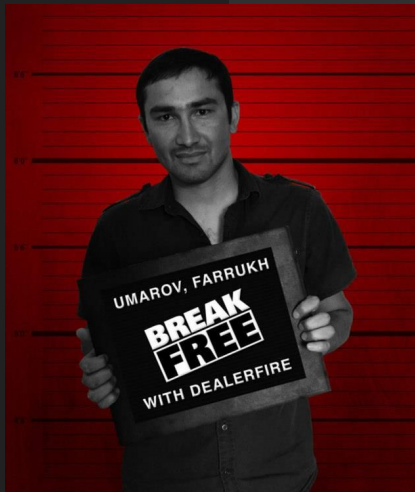
Amplify the awareness  
of opportunities  
surrounding all  
aspects of tech in  
Oshkosh, Wisconsin.



- \$200 million community asset
- generates \$60 million a year in direct economic benefits
- employs hundreds of locals each year



- offices in Tashkent & Kaliningrad
- tech platform  
generated millions in revenue each year
- created hundreds of local tech-related jobs
- opportunities for new graduates






# Let's Wrap This Up...

- hire faster
- decrease costs
- generate local opportunities
- Truss can help

[julia@lincolnlabs.co](mailto:julia@lincolnlabs.co)



**Beer time**



Q & A FIRST